

Category 6 24 Port Patch Panel

DESCRIPTION

The patch panel is a 19-inch rack mountable RJ45 jack panels, Each panel has cutouts that accept virtually all snap-in jacks, the kits includes the new icon labels with plastic holders that you mount on the front of the panel for easy port identification. Blank anodized panels can be mounted directly to an EIA standard 19-inch relay back or cabinets

APPLICATION

- Communication outlet
- Multi-user communication outlet
- Concentration point
- Keystone Jack Loadable

FEATURES AND BENEFITS

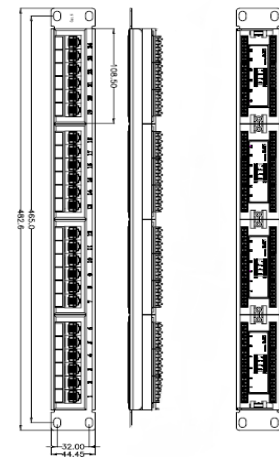
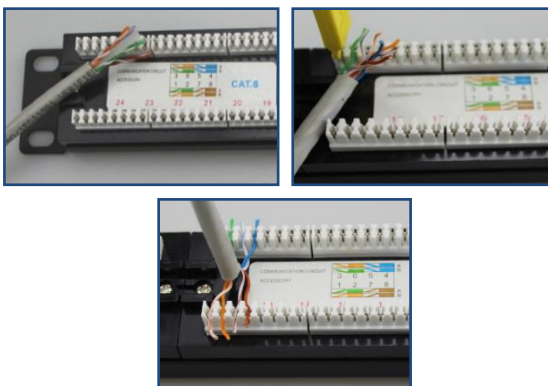
- Design to mount to any standard 19" rack or cabinet
- 24 -port Cat6 Patch panel.
- Space saving ,high-density 1U
- Black Electrostatic Powder-Coated Steel: phosphor bronze with tin plating over nickel.
- Meet or exceed the requirement of ANSI /TIA/EIA 568B.2
- Keystone jacks included to configure your panel to accommodate a variety of schemes
- Sturdy Aluminum Plate around RJ 45 Jacks
- Phosphor bronze with 6-50 micro inches gold plated .
- Available with T568 A.T568 B wiring pattern and meeting the requirement of Cat6 standard.
- Color Coded TIA/EIA 568A (international) and 568B (AT&T Standard) wiring For Easy Installation
- Termination accepts 23,24 AWG solid wires
- Metal sheet: Corrosion resistant steel
- Plastic :fire self-extinguish high impact plastic

ELECTRICAL CHARACTERISTICS

- Dielectric withstanding voltage: 1,000V AC
- DC current rating : 1.5 A
- Insulation resistance : 500 Mega ohm Min
- DC resistance : 0.1 Ohm Max
- Contact resistance : 20 Mega Ohm Max



INSTALLMENT INSTRUCTIONS



Order Information

IP-PP624V2

Infilink 24 ports, Cat 6, UTP, RJ-45, Patch Panel Fully- Loaded