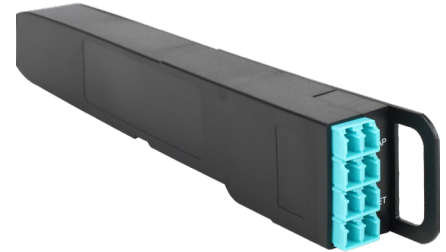


# 40/100G BiDi TAP MODULES

## A PERFECT BLEND OF PERFORMANCE AND FLEXIBILITY

The MOD-TAP is a high-density, modular fiber optic solution providing up to 24 LC TAP modules or 16 MTP or BiDi TAP modules in 1U.

BiDi Fiber TAP Modules are available in OM4 or OM5 Multi-Mode (832-918nm 50/125µm) fiber optic cabling with a 50/50 or 60/40 split ratio for the monitoring of Cisco bidirectional links.



## TECHNICAL SPECIFICATIONS

CHASSIS	ORDER REFERENCE
1U Modular Chassis (up to 16 BiDi modules)	AMC-1U

CONNECTORS	TYPE — SPEED	SPLIT RATIO	ORDER REFERENCE
LC	OM4 MM 50µm — 40G/100G	50/50	F1B-MOD
LC	OM5 MM 50µm — 40G/100G	50/50	F1B2-MOD
LC	OM5 MM 50µm — 40G/100G	60/40	F1B2-MOD-60

	DIMENSIONS (WxDxH)	WEIGHT
MODULAR CHASSIS	440 x 202 x 44 mm 17.3 x 8 x 1.7 in	2140 g 4.7 lb
40/100G BiDi MODULE	25 x 217 x 41 mm 1 x 8.5 x 1.6 in	90 g 0.2 lb

## FEATURES

- Non-intrusive in-line monitoring
- Permanent network link guaranteed
- Monitoring of all OSI layers
- No packet loss, no point of failure
- Passive, unpowered
- High density and modular
- 40G and 100G dual-rate capability
- Backward compatibility with 40G BiDi

## MAXIMUM INSERTION LOSS (DB)

40/100G BiDi (OM4 50µm) 50/50	3.8 / 3.8
40/100G BiDi (OM5 50µm) 50/50	3.8 / 3.8
40/100G BiDi (OM5 50µm) 60/40	2.8 / 4.8

Note: These values don't include external connector loss.

